

Supporting Higher Education in Refugee Resettlement

Building the capacity of colleges and universities to support resettlement.



PRESIDENTS' ALLIANCE | ON HIGHER EDUCATION AND IMMIGRATION



HIGHER EDUCATION AND REFUGEE RESETTLEMENT – OPPORTUNITIES FOR ACTION THROUGH SHERR

Presentation for the Texas International Education
Consortium

February 16, 2024

Learn more: <https://www.worldlearning.org/program/supporting-higher-education-in-refugee-resettlement/>

Supporting Higher Education in Refugee Resettlement

SHERR PANELISTS



Matt Brown

*World Learning SHERR
Program Manager and
Director of Global
Programs*



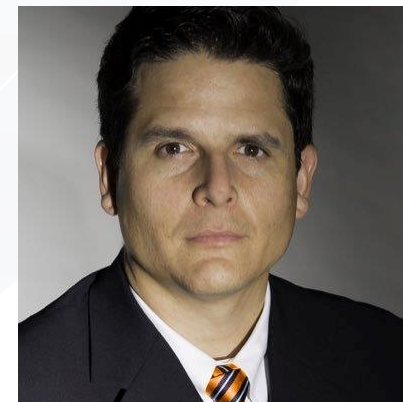
Axelle Nassirou

*Presidents' Alliance on
Higher Education and
Immigration
Associate of Refugee
Access*



Denise Bell

*Welcome.US
Co-Founder, Senior
Advisor for Sponsorship
Policy and Practice
Welcome Campus
Network
Co-Founder*



Arturo Barrio

*UTEP
AVP for International
Relations
Welcome Campus
Network
Facilitator*

Supporting Higher Education in Refugee Resettlement

Unclassified

FY 2023 Reception and Placement Program Affiliate Sites

April 2023

Reception and Placement Resettlement Agencies

BCS: Bethany Christian Services
CWS: Church World Service
ECDC: Ethiopian Community Development Council
EMM: Episcopal Migration Ministries
HIAS: International Rescue Committee
IRC: International Rescue Committee
LIRS: Lutheran Immigration and Refugee Service (now: Global Refuge)
USCCB: United States Conference of Catholic Bishops
USCRI: U.S. Committee for Refugees and Immigrants
WR: World Relief



2750 4-23 STATE (INR)

SHERR Needs Assessment Survey (June/July 2023)

Overall Response

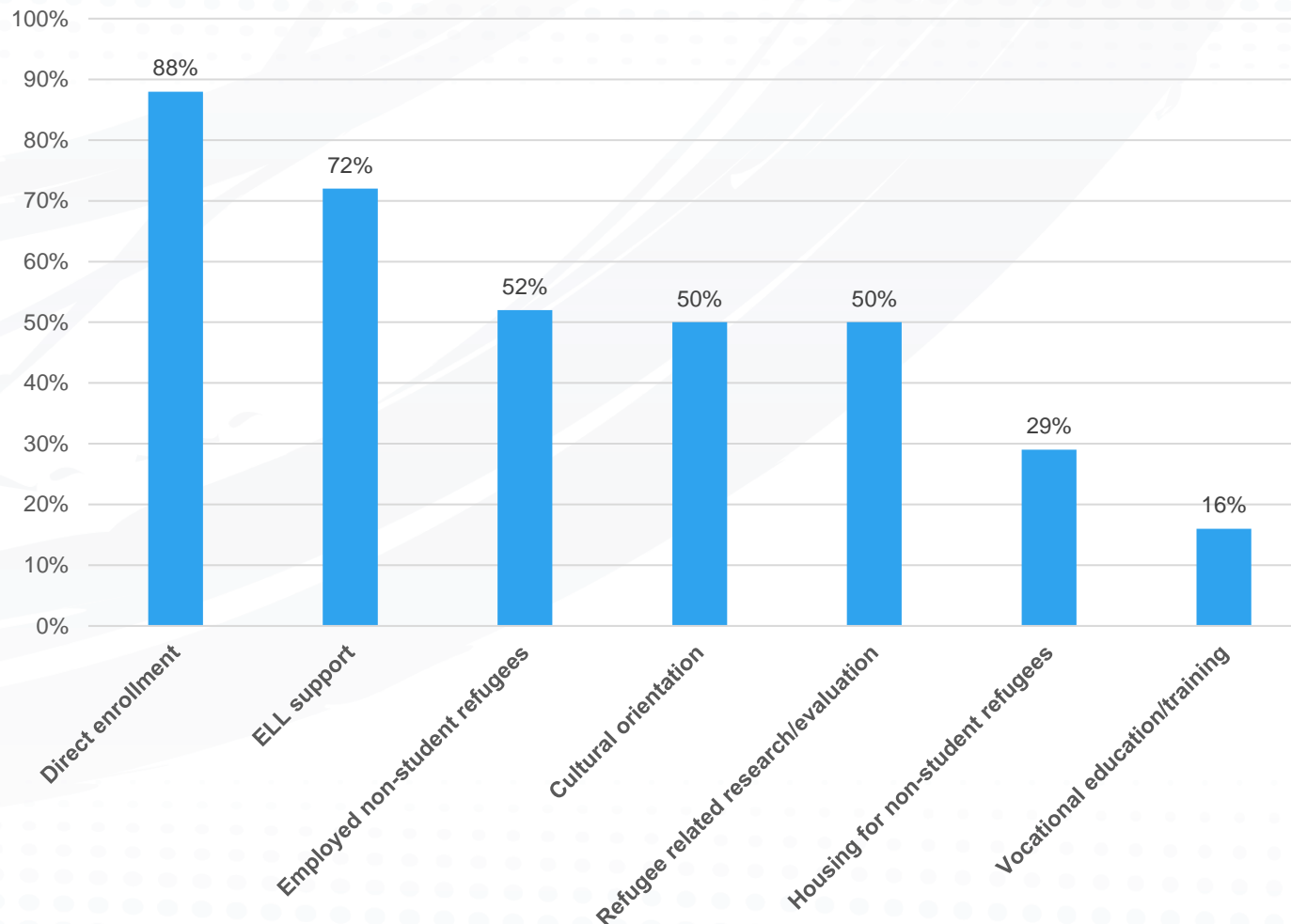
- 97 colleges and universities (51 schools with some experience with refugees) representing 41 states
- 10 HQs of National Resettlement Agencies (6 with experience collaborating with higher ed)
- 66 branches/affiliates of National Resettlement Agencies (40 with experience collaborating with higher ed)

Supporting Higher Education in Refugee Resettlement

SHERR Needs Assessment

Out of 51 unique schools with “some resettlement experience,” the following types of engagement were reported

Types of Refugee Engagement Among HEIs with Experience



Supporting Higher Education in Refugee Resettlement

SHERR NATIONAL WORKSHOP – NOVEMBER 2023



U Denver - RAH program (collaboration with ECDC)



Middlebury College – “Jiran” Arabic Language and refugee welcome program in Connecticut

Supporting Higher Education in Refugee Resettlement

SHERR NATIONAL WORKSHOP



Los Rios Community College District – Refugee Career Pathways



Western Kentucky University – Resilient Refugee Program

Supporting Higher Education in Refugee Resettlement

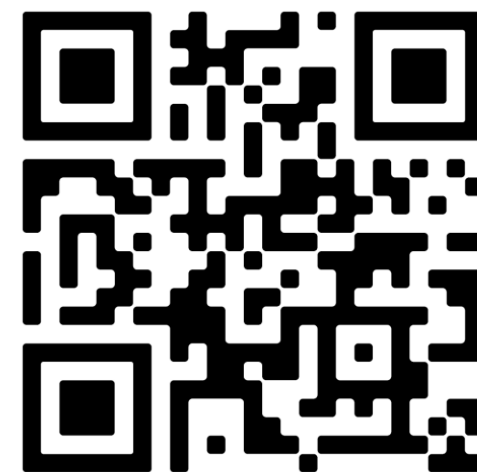


JOIN THE WELCOME CAMPUS NETWORK

Joining WCN means joining a community of colleges, universities, and organizations working with campuses that are committed to welcoming newcomers. Members participate (as available) in meetings twice per month to share information and best practices; learn from national, state, and local officials, advocates, and practitioners on opportunities, trends, and events; participate in communities of practice; and build common solidarity and community. Through SHERR, WCN members benefit from tools, trainings, and resources.

Please complete the Welcome Campus Network Membership form to join. Questions? Contact partners@welcome.us.

VISIT OUR WEBSITE VIA
QR CODE OR USING THE URL (BELOW)



[Welcome.us/more-ways-to-help/welcome-campus-network](https://welcome.us/more-ways-to-help/welcome-campus-network)



Join Welcome Campus Network! →

Supporting Higher Education in Refugee Resettlement

Welcome Campus Network Founding Members



Supporting Higher Education in Refugee Resettlement

2024 WELCOME CAMPUS NETWORK MEETINGS SO FAR:

- **“Resettlement Campuses: What They Are and How to Create Them”**
Diya Abdo Ph.D., Founder and Director, Every Campus A Refuge (ECAR)
- **“A Bottom-Up Model for Refugee Advocacy on Campuses”**
Jawad Hosseini, Student Leader at George Mason University
Executive Director of No Lost Generation
- **“Updates on Welcome Corps and Welcome Corps on Campus”**
Lucretia Keenan, Strategist, Sponsorship Expansion and
Coordination, Community Sponsorship Hub; and
Daniela Westphal Huber, Senior Manager, Welcome.US
Welcome Corps

[Welcome.us/more-ways-to-help/welcome-campus-network](https://welcome.us/more-ways-to-help/welcome-campus-network)

Supporting Higher Education in Refugee Resettlement

Organizations Supporting Colleges & Universities Engaged in Refugee Success

**COMMUNITY
SPONSORSHIP
HUB**

iie The Power
of International
Education

NASH
NATIONAL ASSOCIATION
OF SYSTEM HEADS

 **Refugee
RESETTLEMENT
INITIATIVE**


Welcome.US

ECAR
EVERY CAMPUS A REFUGE

WES WORLD
EDUCATION
SERVICES

 **tiec**
TEXAS INTERNATIONAL
EDUCATION CONSORTIUM

**PRESIDENTS'
ALLIANCE**
ON HIGHER
EDUCATION AND
IMMIGRATION

 **HIGHER ED
IMMIGRATION
PORTAL**

WELCOME CORPUS
ON CAMPUS

Consortia

SHERR

Supporting Higher Education in
Refugee Resettlement

REFUGEE RESOURCE HUB



**Enroll Refugee
Students**



**House Refugees On
Campus**



**Service Learning &
Volunteer
Engagement**



Employ Refugees



Research & Evaluation

<https://www.higheredimmigrationportal.org/communities/refugee-hub/>

Supporting Higher Education in
Refugee Resettlement

REFUGEE RESOURCE HUB



Getting Started



Resources



Spotlights & Models



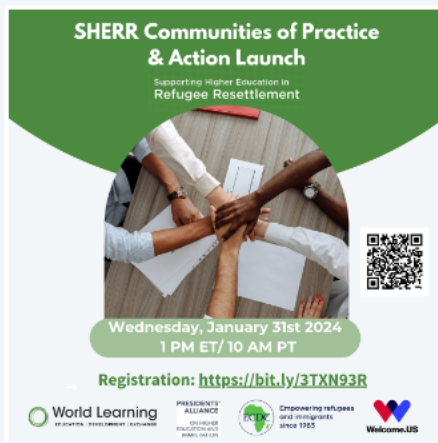
Key organizations providing technical support and resources



REFUGEE RESOURCE HUB



SHERR Communities of Practice and Action Launch Event



The Supporting Higher Education in Refugee Resettlement (SHERR) consortium is excited to announce the launch of four Communities of Practice and Action (CoPAs) which will meet from February to December 2024. The CoPAs combine the premise of a traditional community of practice and a working group, by providing a space to build community and share expertise, as well as by focusing on specific deliverables. They aim to strengthen engagement in refugee resettlement on the part of higher education institutions, with the larger goal of growing and enhancing the domestic capacity for placement of refugees in communities across the United States. You can read more about each CoPA [here](#).

[Register for the launch event >](#)

Upcoming Events

📅 January 31, 2024

Meeting – SHERR Communities of Practice and Action Virtual Launch Event

Supporting Higher Education in Refugee Resettlement (SHERR) Consortium

[Learn More >](#)

📅 February 7, 2024

Meeting – Welcome Corps on Campus Information Session

Welcome Corps on Campus - Mobilization Team

[Learn More >](#)

📅 February 9, 2024

Meeting – Welcome Campus Network

Welcome.US

[Learn More >](#)

📅 February 12, 2024

Meeting – RRI Champions Meeting Q1 2024

NASH RRI

[Learn More >](#)

[See all events](#)

Supporting Higher Education in
Refugee Resettlement

DIRECTORY OF PRACTITIONERS



<p>Diya Abdo Professor and Director Every Campus A Refugee Outreach College AbdoD@uillford.edu m</p> <p>View Full Profile ></p>	<p>Elisabeth Benfield Community Engagement & Sponsorship Manager Elisabeth Community Development Council, Inc. Community Engagement & Sponsorship elb@ecdcus.org m</p> <p>View Full Profile ></p>	<p>Youly Diamanti-Karanou Associate Teaching Professor Northeastern University International Affairs Program p.diamantkaranou@northeastern.edu</p> <p>View Full Profile ></p>	<p>Erin FitzGerald Director, Center for Global Education & Policy Studies Irvine Regina University erin.fitzgerald@irvine.edu</p> <p>View Full Profile ></p>
<p>Noor Ghazi Director of the University Sponsorship Program Every Campus A Refugee nghazi@uillford.edu m</p> <p>View Full Profile ></p>	<p>Rosie Hughes Senior Advisor, NAH&R National Association of Higher Education Systems, Refugee Resettlement Initiative rosie@nahe.edu m</p> <p>View Full Profile ></p>	<p>Olivia Issa Program Lead NAH&R Refugee Resettlement Initiative oissa@nahe.edu m</p> <p>View Full Profile ></p>	<p>Ashley Loper-Nowak Communications, Research and Engagement Consultant Every Campus A Refugee ashley@everycampusarefugee.org</p> <p>View Full Profile ></p>
<p>Danielle Macdonald Associate Professor The University of Tulsa, Anthropology & Sociology danielle-macdonald@tulsa.edu m</p> <p>View Full Profile ></p>	<p>Walid Mosarsaa Senior Program Coordinator Every Campus A Refugee walid@everycampusarefugee.org m</p> <p>View Full Profile ></p>	<p>Karissa Porter Director of Refugee Career Pathway Program Business Community and Technical College Global Learning karissa.porter@ctcs.edu</p> <p>View Full Profile ></p>	<p>Manal Sidi Program Manager Welcome US manal@welcome.us</p> <p>View Full Profile ></p>

Use the filters below to refine your search:

State

Institution Types

Area of Practice

Affiliations

Go

Join the Directory +

Supporting Higher Education in
Refugee Resettlement

REFUGEE RESOURCE HUB



**Welcome Campus
Network**



**SHERR
Communities of
Practice & Action**



**Directory of
Practitioners**



**Info on Refugee
Resettlement**



Funding

SHERR COMMUNITIES OF PRACTICE AND ACTION

- #1 English Language Learning and Career Support
- #2 Housing and Campus Utilization
- #3 Developing Refugee Educational Opportunities:
Reducing Barriers to Enrollment
- #4 Service Learning, Volunteer Engagement, and
Staffing



SHERR INNOVATION INCENTIVE GRANTS



- Grant size: \$25,000 - \$50,000
- No longer accepting applications
- Funding for: collaboration between higher education and resettlement agencies
- Priority areas: housing, service learning

Supporting Higher Education in Refugee Resettlement



Join WCN



Refugee
Resource
Hub



SHERR Email
to be added to
the mailing list



SHERR
Landing
Page

Q&A

Supporting Higher Education in
Refugee Resettlement

THANK YOU!

SHERR email address for additional questions:

SHERR@worldlearning.org